

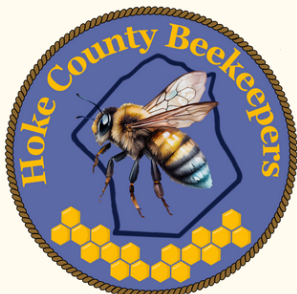


HCBC Monthly Newsletter

The official newsletter of the Hoke County Beekeepers Chapter Est. 2024

 [Hoke County Beekeepers Chapter - NC](#)

 www.hokecountybeekeepers.com



Ever wondered
what food you
could make with
your bees honey?
SEE PAGE 7

Featured club photo!



Photo by Hector Santiago

Up Coming Events:

- **February 17th, 2024 - Bee school**
 Bee school begins! We are so excited to be able to bring this resource to the local community! Welcome all! See page 2
Time: 8:00am - 12:30pm
Location: Robert A. Wright Hoke County Agricultural Center, 645 E. Palmer St. Raeford NC 28376
- **February 22nd, 2024 - Monthly Club Meeting**
Monthly Meeting Agenda See page 2.

 - TBA**Time:** 6:30pm
Location: Robert A. Wright Hoke County Agricultural Center, 645 E. Palmer St. Raeford NC 28376
 The Hoke County Beekeepers Chapter welcomes new members, existing members and visitors to attend our meetings
- **February 24th, 2024 - Bee school**
 Bee school begins! We are so excited to be able to bring this resource to the local community! Welcome all! See page 2
Time: 8:00am - 12:30pm
Location: Robert A. Wright Hoke County Agricultural Center, 645 E. Palmer St. Raeford NC 28376

Helpful Reminder: Since we have entered into a new year, this means new color to mark our emerging queens! Not everyone does this, but the people who do, do it to

- Find the Queen better
- Keeps track of her age (Indicates when she was born)

Hint: The color is GREEN!

The Farmers Cyberside

QUEEN BEE

Year Colors



Blue	White	Yellow	Red	Green
Years ending in 0 or 5	Years ending in 1 or 6	Years ending in 2 or 7	Years ending in 3 or 8	Years ending in 4 or 9

Don't forget about our Bee school!



DO YOU WANT TO BE A BEEKEEPER?

SIGN UP FOR OUR BEE SCHOOL!

Topics Covered:

- History of Beekeeping
- Equipment
- Bee Biology
- Bee Pests & Diseases
- How to install Package or NUCs of bees
- Bee Species & Races
- and so much more!

\$60 singles. \$80 for families.
Fees cover:

- Materials
- Beginner Beekeeper book,
- 1yr membership for HCBC & NCSBA
- Written/practical exam for NC Certified Beekeeper,
- and mentoring throughout the year!

4-week sessions: Saturdays...
Feb 17th, and, 24th,
Mar 2nd, and 16th.
8:30am – 12:30pm

FOR MORE INFORMATION & APPLICATION GO TO OUR WEBSITE OR SCAN THE QR CODE

HOKECOUNTYBEEKEEPERS.COM /BEEESCHOOL



February Monthly Meeting:

- **February 22nd, 2024 -**

Monthly Meeting Agenda

- TBA

Time: 6:30pm

Location: Robert A. Wright Hoke County Agricultural Center, 645 E. Palmer St. Raeford NC 28376

If you want a look at what January meeting was about, visit our archive of past Meeting Minuets!

<https://www.hokecountybeekeepers.com/meeting-minutes>

--Every meeting we have our 50/50 and Raffle drawings. Here are some bee-utiful ideas for items you could consider donating for the raffle:

- Bee-themed artwork or crafts
- Locally sourced honey or beeswax products
- Beekeeping tools or accessories
- Pollinator-friendly plants or seeds
- Beekeeping literature or educational materials
- Baked goods

If you have a specific bee-related item in mind or would like suggestions tailored to our club's interests, feel free to let us know. Your hive-minded contributions, no matter the size, will make a positive impact--

**A huge thank you to the members
who have paid for the 2024 year
already!**



Jeff Latta,
Carl Daniels,
Guy Wall,
Simon Dean,
Joyce Garner,
Russ Hoskins,
David Williams,
Dave Kennedy,
Rosemary San Nicoles,
Michael Hyers,
Jason Allen,
Joanna Craig,
Sarah Nelson,
Wilbur Schrum (Buck)

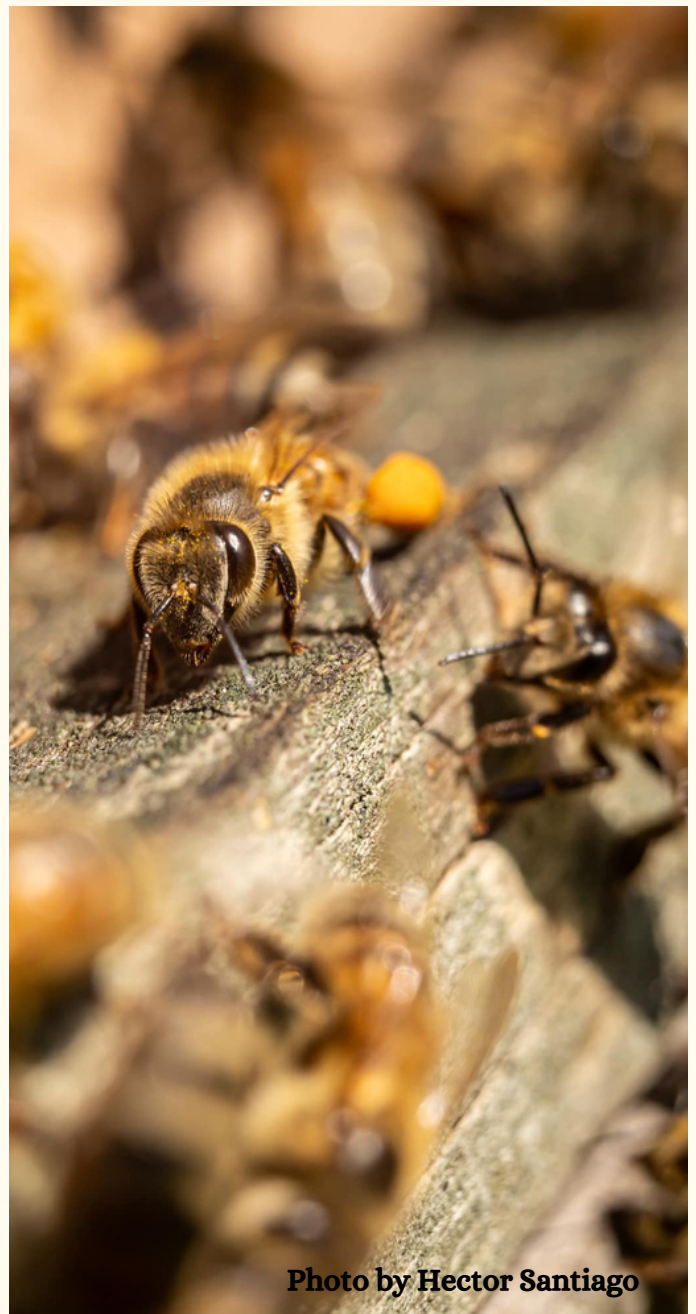


Photo by Hector Santiago



Photo by Hector Santiago



HCBC Committee

President	Carl Daniels
Treasure	Guy Wall
Secretary	Joanna Craig
Vice President	Aaron Silva
Officer	Sarah Nelson
Officer	Russ Hoskins
Officer	Buck

February Beekeeping:

“Remember: bees often follow a different calendar than humans do!” - Nancy Ruppert

- Noticeable pollen flow under way, especially red maple- brood build-up intensifying.
- Minimal if any nectar available---most hives need feeding (1:1 syrup in most cases, unless honey stores very low [i.e., <1/2 super left]).
- Combine hives if needed
- Repair/replace equipment if needed; move hives if needed; keep learning.
- During last half of February, consider adding super/hive body of wax foundation to allow bees to draw out more comb for spring. (Feeding or nectar is required for this.)
- Replace a few (<4) frames where comb is old or has excessive drone cells.
- Some hives may need treatment for Nosema disease, especially if too cold for cleansing flights.
- Call your local cooperative extension office if you want your name on a “swarm-catcher” list.
- Hoke County Main Swarm Hotline: (910) 875-3461
- Make plans to attend the annual NCSBA Spring Meeting in March.

Nancy Ruppert, Former Apiary Inspector, NCDA & CS ©copyright 2015

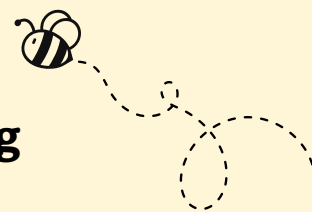
In the news...

“Town of Wake Forest orders teen to stop beekeeping at property, family says”

<https://www.cbs17.com/news/local-news/wake-county-news/town-of-wake-forest-orders-teen-to-stop-beekeeping-at-property-family-says/>

Advisory on the Applicability of FIFRA and FFDCA for Substances used to Control Varroa Mites in Beehives

<https://www.epa.gov/pollinator-protection/advisory-applicability-fifra-and-ffdca-substances-used-control-varroa-mites>





February Flower of the month:

Camellia (*Camellia japonica*)

Camellias are a traditional garden favorite that provide beautiful flowers in the winter garden. There are many cultivars of camellias available for landscapes. Camellias have been a cherished plant in southern gardens for years, known for their flowers that bloom in the winter and range in color from white through pink to deep red. The flowers can be simple, single flowers with few petals or be double flowers that include numerous petals. Camellias range from large shrubs to small trees and have dark-green, broad-leaf evergreen leaves. Camellias tend to favor moist, acidic, well-drained, high- organic matter soils.

Read more at: <https://wayne.ces.ncsu.edu/2022/02/whats-blooming-in-february/>



We have T-shirts!!



If you are interested in a club shirt, come to one of our monthly meetings and we can get your order in!

Shirts can come in any size and color for \$24!

Puzzles & comics:



QueenSpotting puzzle #1 (an intermediate level challenge)



Featured Honey Recipe: Honey Cornbread

Total Time: Prep/Total Time: 30 min. Makes: 9 servings

Ingredients

- 1 cup all-purpose flour
- 1 cup yellow cornmeal
- 1/4 cup sugar
- 3 teaspoons baking powder
- 1/2 teaspoon salt
- 2 large eggs, room temperature
- 1 cup heavy whipping cream
- 1/4 cup canola oil
- 1/4 cup honey

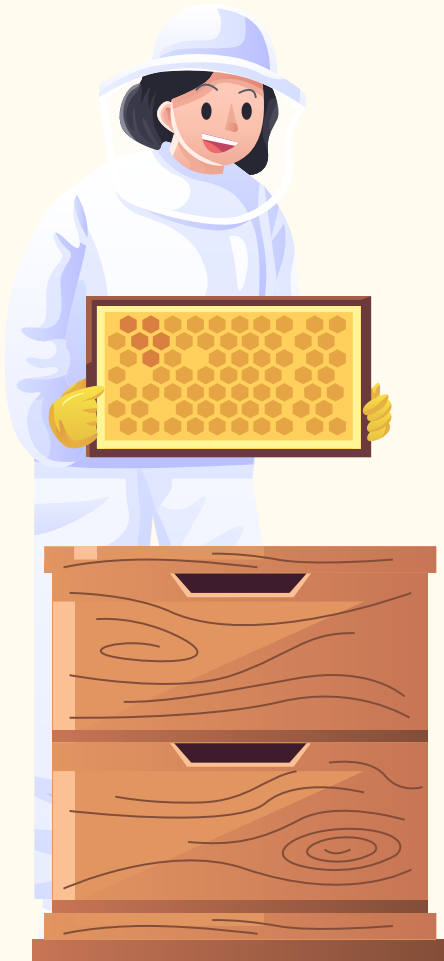


Directions

Preheat oven to 400°. In a bowl, combine flour, cornmeal, sugar, baking powder and salt. In a small bowl, beat the eggs. Add cream, oil and honey; beat well. Stir into the dry ingredients just until moistened. Pour into a greased 9-in. square baking pan.

Bake for 20-25 minutes or until a toothpick inserted in the center comes out clean. Serve warm.

If you have a recipe you'd love to share with the club, feel free to send it in to hokecountybeekeepers@gmail.com and include a pretty picture of what the recipe makes. Whos ever recipe is picked you will be mentioned in our next newsletter!



What's coming next month...

- NCSBA Spring Meeting. March 7th-9th. New Bern, NC (pictured)
- Bee School Continued: March 2nd & 16th.
- HCBC Monthly Meeting: March 28th.

